

Information for label holders

The eco-INSTITUT label at a glance

eco-INSTITUT Germany GmbH awards the eco-INSTITUT label to construction and furnishing products, furniture, cleaning products, mattresses and bedding that are **particularly low in pollutants and emissions**. Suitable products must be **harmless to health** and meet certain **environmental criteria**.

The basic prerequisite for certification is the passing of the **document inspection**. During this, eco-INSTITUT examines whether a product is fundamentally eligible for certification based on the manufacturer's information regarding the raw materials and other product



properties. This is followed by **extensive laboratory analyses** with strict requirements for emissions, harmful substances and odours.

Following successful certification, the

eco-INSTITUT label is awarded for **2 years**. During this period, neither the product composition nor the production process may be altered – this is verified by eco-INSTITUT after one year in the form of a conformity test.

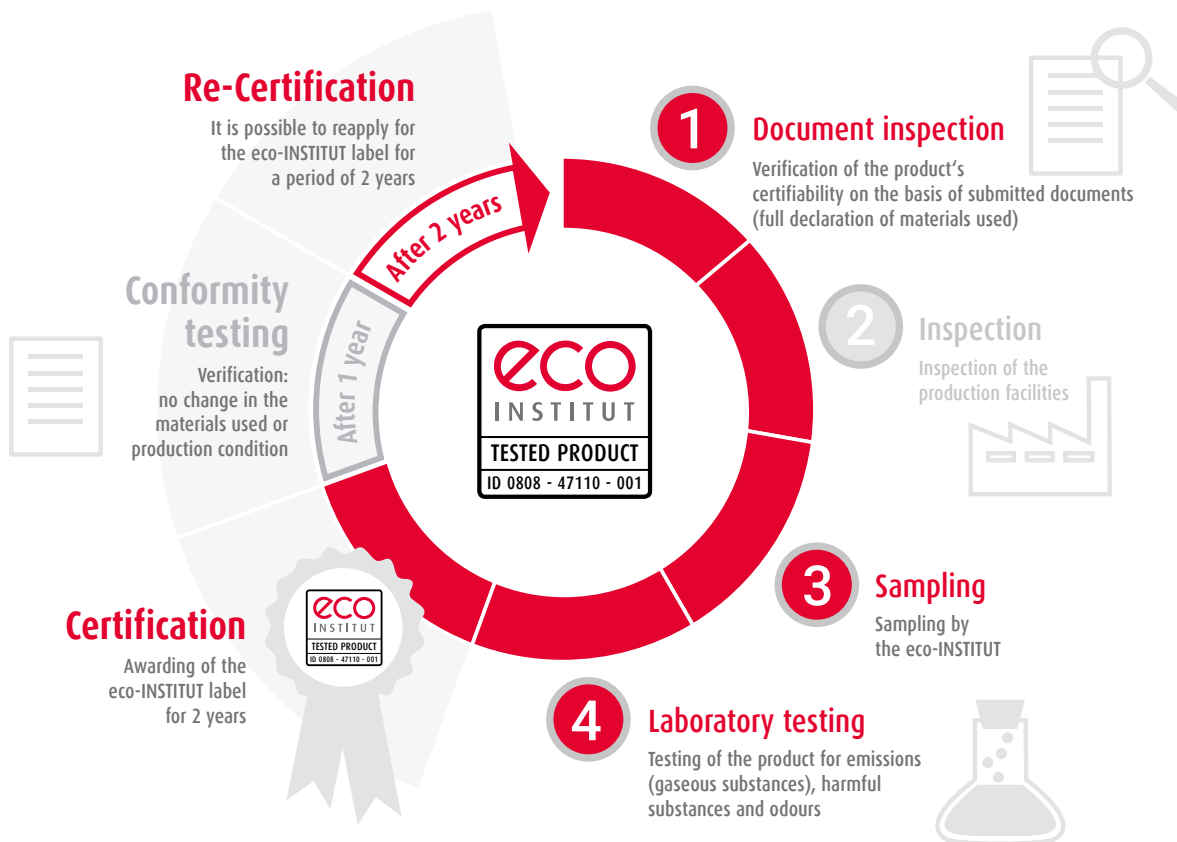
After 2 years, the product can be **re-certified**. A complete re-examination (document inspection and laboratory testing) is required for this.

The test criteria are regularly updated and published on the eco-INSTITUT label website (www.eco-institut-label.de). You can also find more information here.

Construction products, floor coverings, furniture and other furnishings are among the main sources of indoor pollutants. They can release harmful substances into the indoor air or contain problematic chemicals such as plasticisers or flame retardants that accumulate in household dust.



Acquiring the eco-INSTITUT label step by step



The benefits of the eco-INSTITUT label

<p>Safety</p> <p>Safe limit values that go beyond legal requirements</p> <p>Extensive monitoring of pollutants (emissions and materials used) and additional odour measurement</p>	<p>Competitive advantage</p> <p>Versatile use of the label – e.g. on product packaging, in brochures, on the company website</p> <p>Decision-making aid for architects, general contractors, planners, building owners and consumers when selecting products</p>	<p>Market entry</p> <p>Easier market entry to international, sustainable markets: recognised for many building certification programmes such as LEED, DGNB, Breeam</p> <p>Certificate in three languages (D – EN – F)</p>	<p>Qualitätslabel</p> <p>Recommended by independent bodies: e.g. WDR Haushalts-Check, ÖKO-TEST Magazine, VERBRAUCHER INITIATIVE e.V. (label-online.de)</p> <p>Listed in the Federal Government's Sustainable Shopping Basket</p>	<p>Service</p> <p>Fast and transparent certification process</p> <p>Fair pricing</p> <p>Personal contact/ direct contact person</p>
---	---	--	---	--



eco-INSTITUT has access to over 120 test chambers made from glass and stainless steel at its modern laboratory measuring around 500 m². The sizes of the chambers range from 100 l to 20 m³.

Easier market entry with the eco-INSTITUT label

The main feature of the eco-INSTITUT label criteria is the **detailed list of emission requirements** for critical substance groups and individual substances. This is based, among other things, on the current list of NIK values from the AgBB, but also includes the German Indoor Guide Values RW I.

Emission tests are usually carried out after 3 and 28 days in accordance with EN 16516. Due to the strict eco-INSTITUT label criteria, emission requirements for products are covered or recognised in other **national and international evaluation programmes**, such as ...

- | | | |
|---|---|--|
| <ul style="list-style-type: none"> ■ AgBB scheme Germany
(Committee for Health-related Evaluation of Building Products) ■ State Building Codes/MVV TB Germany: Requirements for structural installations regarding health protection (ABG) ■ Belgian VOC regulation ■ French VOC regulation Class A and French CMR regulation ■ eco-bau Switzerland (solvent criterion) ■ WELL International (International WELL Building Institute) | <ul style="list-style-type: none"> ■ LEED v4.1 Option 2 and LEED v4 for projects outside the U.S.; EQ credit low-emitting materials: VOC emissions requirements (formaldehyd emissions after 28 days < 10 µg/m³) ■ DGNB International (ENV1.2 – Local environmental impact; 2018): Emission evidence from rows 6, 7, 8, 9, 11, 13, 20, 23, 47a, 48 – New buildings and interior criteria matrix (Appendix 1) and rows 1 and 2 – Interior criteria matrix (Appendix 2) ■ Breeam and HQM International (except „paints & varnishes“): Hea 02 Indoor air quality | <ul style="list-style-type: none"> ✓ German Quality label Sustainable Building (QNG) (3.1.3 Pollutant avoidance in building materials): General requirements for SVHC, VOC emissions and chemical content 1-4, 5.6, 5.7, 6, 7, 12.3-12.6 ■ Italian Green Public Procurement (I Criteri ambientali minimi – CAM) ■ Danish Indoor Climate Labelling ■ BVB Sweden (Byggarubedömningen): VOC emissions (and chemical content) ■ Global Organic Latex Standard (GOLS) |
|---|---|--|

The list is not exhaustive.

About eco-INSTITUT

Healthy indoor air in focus

More than 30 years ago, eco-INSTITUT recognised that good-quality indoor air is crucial for health and well-being. Today, the independent, owner-managed company is one of the most experienced German laboratories for interior analysis.

eco-INSTITUT tests construction and furnishing products, furniture, electrical appliances, mattresses and bedding – frequent pollutants indoors – for unwanted chemicals and evaluates the products according to current legal requirements. In addition, the company is an accredited testing body for a variety of voluntary national and international environmental and health labels such as natureplus, Blue Angel and the EMICODE® seal.

The eco-INSTITUT label

eco-INSTITUT developed its own quality seal in 1995, resulting in today's eco-INSTITUT label, which identifies products for indoor use that meet the most stringent emission and

pollutant requirements. Today, approximately 300 products from around 130 manufacturers have been awarded the eco-INSTITUT label.

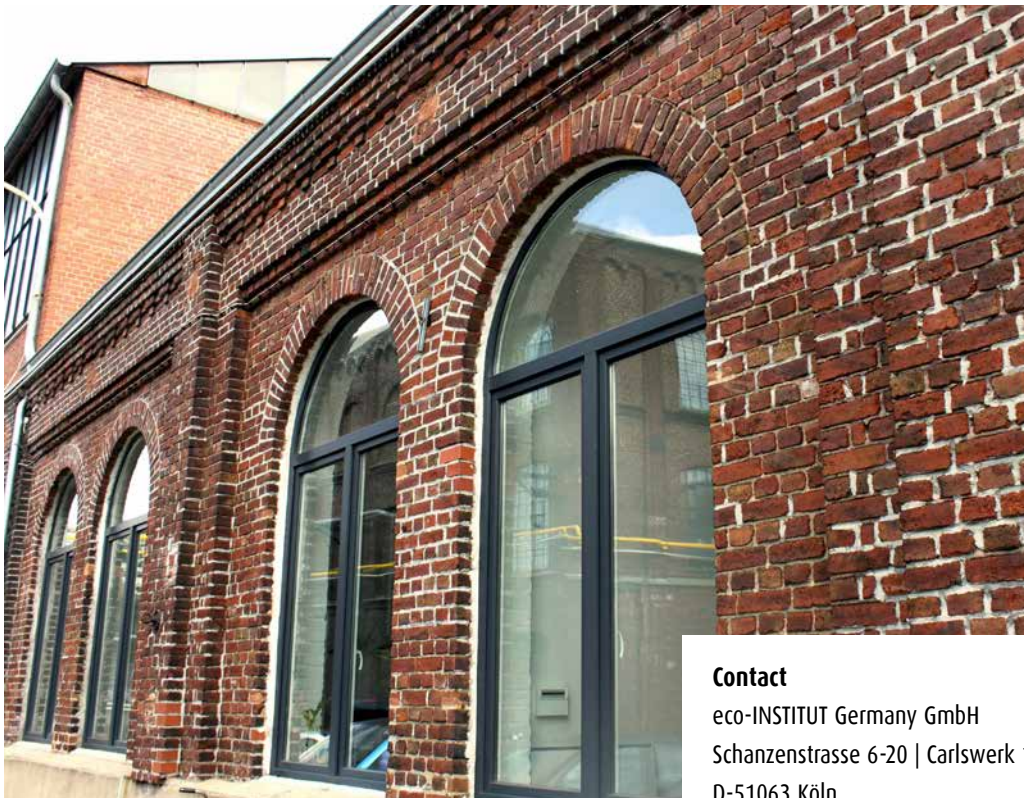
More information

www.eco-institut.de

www.eco-institut-label.de



Emission testing is a focus of the eco-INSTITUT. In addition, the company carries out odour measurements and tests products for harmful substances such as plasticizers, heavy metals or pesticides.



Contact

eco-INSTITUT Germany GmbH
Schanzenstrasse 6-20 | Carlswerk 1.19
D-51063 Köln

Tel. +49 221.931245-0
Fax +49 221.931245-33
info@eco-institut.de